



OLTON CHESS CLUB

NEWSLETTER 83

MAR 2007



OLTON 2ND AGAIN IN LIGHTNING

The annual BDCL Lightning Tournament returned to Olton on Tuesday 13th March and the club fielded four teams of four. Games were played at the rates of 10 seconds per move and the action was fast and furious as ever.

This year, there were a total of 14 teams from across the League, competing in three sections. The event was controlled by Lee Collier and Mike Biddle.

The A and B sides were in the top section with their opposite numbers from South Birmingham, in a double-round group. The A's (Phil Holt, Alan Lloyd, Robert Reynolds & Richard Reynolds) started well with a 3½-½ win over South Birmingham B, but only drew 2-2 in the return match. The matches against Olton B saw a 2-2 draw and a 2½-1½ win for the A's, but it wasn't really enough. The South Birmingham A side were too

strong for the other three sides and took the title.

The B team (Mark Cundy, Dave Cheshire, Rob Wallman & Andy Cottom) struggled a bit in this tough group, although they did beat South Birmingham B 3-1, before scoring just a half-point in the return match.

There were no Olton teams in section B, but two were entered in section C. The C team (Chris Pitt, Bram Garner, Pete Singh & Stuart Bradley) drew both matches against Rushall B and took two points off eventual winners Redditch. However, they could do little better than draw 2-2 and lose 2½-1½ to the Olton D team.

The D's (Kim Gilbert standing in for John Clulee, Bill Yeomans, Mick & Courtney Kerr) also drew with Rushall and took 2½ points off Redditch to finish second. As ever, it was a great fun event for all who took part.

DIVISION 1 TEAMS STRUGGLE

Olton's First division teams in both Leagues have struggled this season, but as the season draws to a close, only the Birmingham League B team is facing relegation.

They finally managed a point against Sutton Coldfield, whilst fielding their weakest team to date. The A team went on to lose to the same opposition.

The A's have done enough to ensure top flight competition next season, but their performances have been haphazard at best.

Trevor Holt had a good win to draw the match against South B'ham B, the end of which appears later. The team had a good win over Warley Quinborne and also beat Halesowen.

In the Leamington League, Olton B have drawn several matches including against Stratford. The A team are ahead of the pack, but have slipped up against Shirley and need a good result in the final match. The open cup match had a narrow escape in the semi-final against Leamington and meet Banbury in the final. Now, here's a game from Phil Holt, played this year in the Leamington League match against Leamington.

This and the following game are in algebraic notation, so if you don't know it, its time to get used to it.

WHITE

A.Price

1. e4
2. f4
3. exd5
4. Nf3
5. d4
6. dxc6
7. Bc4
8. O-O
9. Nc3
10. Ne2 ? (This looks a little

BLACK

P.Holt

- e5
- d5
- exf4
- Bd6
- c6
- Nxc6
- Nf6
- O-O
- Bg4

dodgy. Nb5 may be better, eg. Bb8; 11. c3 a6; 12 Na3 and White's d pawn is looking a little more solid.)

10. Rc8 (Better than Qc7 or Qb6, where White has time to play Bd3 or c3 as required)

11. Bb3 Re8

12. c3 (White has an opportunity to capture the f pawn before it becomes a nuisance, but instead prefers to hold on to the passed d pawn.)

12. Qc7

13. Kh1 Na5

14. Neg1 ? (This just sits back and allows Black in. White must get the Bishop to d3 by

14. Ba4, then b5 or c2.

Alternatively, Qd3 would do.)

14. Nc4

15. Re1 (Qd3) Rxe1

16. Qxe1 Re8

17. Qf2 ? (Only marginally better is Qh4 Ne3; 18.Bxe3 fxe3; 19.Re1 Bf4)

17. Ne4

18. Qf1 Ne3

19. Bxe3 fxe3

20. Nh3 Bxh2 !?

(Played quickly and does win, but even better is...) 20... Bxh3 21. gxh3 Bxh2 ! as White is no longer defending the f2 square.)

21. Qc4 Qxc4

22. Bxc4 Bg3

23. Kg1 Nd2 !

24. Be2 Nxf3+

25. Bxf3 Bxf3

26. gxf3 e2

27. Resigns 0-1

LATEST RESULTS

Division 1A

Olton 3-3 South Birmingham B
Warley Quinborne 2-4 Olton

Division 1B

Sutton Coldfield 3-3 Olton
Olton 1½-4½ Warley Quinborne

Division 3

Olton 4½-1½ St. Georges
Olton 5-1 Sutton Coldfield
Olton 3-2 South B'ham
Mutual 3-3 Olton
Boldmere 4-2 Olton
Kynoch II 4½-3 Olton III

Division 5

Tamworth 3-3 Olton
Olton 5-1 South B'ham
Boldmere SM 2½-3½ Olton
Olton 1-4 Halesowen
Olton V 3-3½ Walsall V

Olton 1A

Olton 2½-1½ Solihull
Olton 3-1 Leamington
Leamington 2-3 Olton (Cup)
Olton 4-Def Nuneaton
Olton B 2-2 Olton A
Olton 2-2 Stratford
Shirley 2½-1½ Olton

Olton 1B

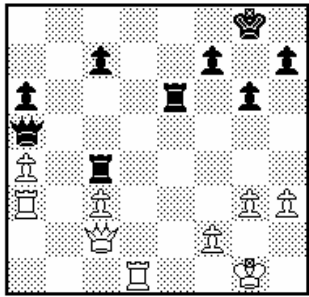
Olton 3-1 Kenilworth
Olton 2-2 Leamington
Solihull 3-1 Olton
Stratford 2-2 Olton

NEW MEMBERS

The club welcomes new members Mick and Courtney Kerr, who joined recently. Both have been registered in Division 5.

Mark Radford has also joined the club and has been registered in Division 5. Mark has already had an impact in this team and the higher ones as a reserve.

TREVOR HOLT - ENDGAME EXPERT ?!



Trevor was playing this adjournment against Terry Walker in the Olton 1A v South Birmingham B match. The team had lost to the other two South B'ham sides and were 3-2 down in this match. Trevor thought he had sealed the wrong move (intending 1...Qc5) and this turned out to be the case. The game continued as below, with notes from Phil Holt.

1..... c5
2. Qd3 Rce4
3. Qd8+ Qxd8
4. Rxd8+ Kg7
5. Rc8 Rc4
6. a5 h6
7. Kg2 g5
8. Rb3 Kf6
9. Rb6 ? (White cannot give up the c pawn. Rc7 is better keeping equality)
9..... Rxc3
10. Rcc6 c4
11. Rxa6 Ke5 (Ra3! is better)
12. Rab6 Kd5 !
13. Rxe6 fxe6 (Now Black is clearly better)
14. Rb5+ Kd4
15. Rb6 Ra3
16. Rxe6 c3
17. Rd6+ Kc5
18. Rd8 Rxa5
19. Kf3 Kc4
20. Rc8+ Rc5
21. Rxc5+ Kxc5
22. Ke2 Kd4 ? (The wrong square - Kc4! wins; eg 22... Kc4 ! 23. Kd1 Kd3 24. Kc1 h5 25. f3 Ke3 etc)
23. f4 ?? (This loses. f3! holds the draw; eg. 23. f3 ! Kc4 24. Kd1 Kd3 25. h4 gxh4 26. gxh4 h5 27. f4 Ke4 and the White King has time to return to f1 to hold the draw)

23..... gxf4
24. gxf4 Ke4
25. f5 Kxf5
26. Kd3 Kf4
27. h4 Kg4
28. h5 Kxh5
29. Kxc3 Kg4
30. Kd4 Kf4
31. Kd3 Kf3
32. Kd2 h5
33. Ke1 Kg2
34. Ke2 h4
35. Ke3 h3
36. Resigns

BIRMINGHAM LEAGUE NEWS

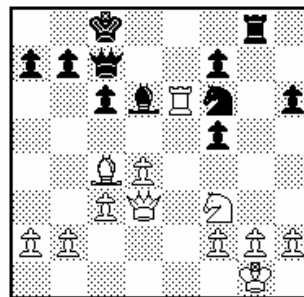
The division 1 sides have struggled as we have already seen. There have been some good individual performances, though. The 1B team's draw against Sutton saw Mark Cundy win on top board and the 5-1 drubbing by Halesowen included saw Rob Wallman beat Stewart Fishburne on board 2. In the A team's match, a 3½-2½ win for Olton, Phil Holt had a great win over the same player.

Elsewhere in the League, Division 3 are making good progress, with good wins over St. Georges and Sutton Coldfield. They have had setbacks – a 4-2 loss to Boldmere and a 3-3 draw against Mutual in a match that could have gone either way. Their good cup run was ended by Kynoch II, who as good as most Division 1 sides. Division 5 have had mixed success, with a pasting from Halesowen, a draw against Tamworth and most recently, a good win against Boldmere St. Michaels. They narrowly lost to Walsall V in the cup. Now, we return to the Leamington League cup, for a game which could have affected the final match result. The final will be held at Leamington on Tuesday 17th April.

WHITE **BLACK**
R.C.Reynolds **S.Burnell**

1. P-K4 P-QB3
2. P-Q4 P-Q4
3. N-Q2 PxP
4. NxP B-B4

5. N-N3 B-N3
6. N-B3 N-B3
7. B-QB4 P-K3
8. O-O QN-Q2
9. P-B3 B-Q3
10. R-K1 Q-B2
11. B-KN5 (Q-K2 and N-K5 is possible)
11. P-KR3
12. BxN ?! (This gives Black the chance to open the N file, but now the Black centre can be challenged)
12. PxB
13. N-K4 (N-R4 looks feasible, but Black has a variety of responses. White's plan would be to pressurise the KB and KR pawns)
13. BxN
14. RxB O-O-O
15. R-KN4 QR-N1
16. RxRch RxR
17. Q-Q3 (White's alternative plan is a Q-side pawn charge with P-QN4 and P-QR4)
17. P-KB4
18. R-K1 N-B3
19. RxP !? (White's long-term prospects are not good. The King's side looks vulnerable to attack. This looked like a reasonable way to dissolve the attack and come out with chances)



19. N-N5 ?
(PxR; 20.BxPch K-Q1; 21.BxR NxB looks about level)
20. RxB ?! (QxP! is winning. It looked tricky at the time, but Black cannot just reply Q-Q2, as White follows up with 21. P-KR3. Instead, Black can play 20. ...BxPch; 21.K-B1 Q-Q2; 22.Q-K4 B-B5; 23.R-K7 N-B3; 24.RxQ NxQ and White has a good endgame. Annoying, but that's the way the cookie crumbles)
20. QxR
21. QxPch Q-Q2
22. QxP QxQ
23. BxQ R-N2

PHIL HOLT'S PUZZLE

Phil set us a puzzle in the last newsletter and the solution is given here. It was white to play and mate in 3.

1. Q-N3 (Threat RxN)
1. QxQch
2. BxQch R-B2
3. RxN mate or
1. Q-K3
2. RxNch K-B2
3. NxN or R-KB1 mate or
1. P-R3
2. RxNch K-R2
3. RxN mate or
1. PxN
2. RxNch K-R2
3. Q-KR3 mate

24. B-K6ch K-B2
25. P-KR3 (P-QR3 is suggested for reasons which become clear later)
25. N-B3
26. N-K5 R-K2
27. B-B5 (The Bishop should really drop back to N3)
27. N-Q4
28. P-KN3 P-B4
29. K-N2 PxP
30. PxP

Draw agreed

Fritz suggests that White is still better, but time was getting short and the White QP looked weak. After 30. ... N-N5; 31. P-R3 N-B3, the Knights are exchanged. Alternatively, White gives up the QR Pawn and plays 31.K-B3 and then P-KN4, but that is another story. In the event, Alan Lloyd held on for a draw to win the match, Mark Cundy the only winner on the night.

LEAMINGTON LEAGUE LIGHTNING

This individual Lightning tournament takes place on Wednesday 25th April at Solihull's venue, the Blossomfield Club, Widney Lane, Solihull.

This takes the form of a 9-round 5-minute Swiss Tournament, with a graded section for players under 125. Please support this event.

Richard Reynolds