



OLTON CHESS CLUB

NEWSLETTER 86 JAN 2008



A TEAM LOSE TO B'S

The Leamington League A team have had a bad time this season and their lowest point was a loss to the B side. Despite fielding a full team, the A's struggled on the night to make any headway and the score could have been even worse. The B team were struggling to find a fourth player and eventually, Martin Smyth was brought in on top board. His game against Phil Holt looked a clear win, with what seemed like many chances to break down his opponent. Meanwhile, on board 2, Richard Smith was locked in battle with Alan Lloyd. Board 3 saw Richard Reynolds go into a typically complicated position against Mark Cundy. The pieces came off and the game was drawn, although Mark probably had the

advantage. Dave Cheshire and Robert Wallman had a fairly interesting encounter on board 4, both players looking to break through on either side of the board. Suddenly, both players seemed to lose interest and the game was drawn. Back to board 2 and Richard gave up an exchange for a passed pawn on the Queen's side and this eventually told, so the B's were one up. There was a nervous time while Martin on board 1 carefully crafted his surefire win into a draw, but at least he didn't lose. The A team have dropped a number of points this season, so it won't be a championship year, unless other teams flounder. Let's hope we have success from some of our other teams in the two Leagues.

BIRMINGHAM LEAGUE NEWS

Division 1 have had a reasonable first half to the season, currently standing third with 8 points from 7 matches. After a bad start, they have beaten Warley Quinborne, Halesowen and Tamworth, the latter two by big margins. In both cases, there were wins from Phil and Alan on the top boards and no one actually lost. The team has also drawn with Kynoch and Shirley. The Kynoch match was a typically bad night for the team, where good positions turned sour over the course of the games. The result against Shirley was a good one against one of the stronger sides faced this season.

The team went out of the Homer Trophy, as last season, against Stourbridge II, but at least Olton won over the boards this time. Division 2A are currently top of the division, but have played two more matches than their nearest rivals. A 4½-1½ trouncing by Solihull was reversed by a solid performance against

opponents were able to counter this and won comfortably in the end. Steve Chadaway's win by checkmate on a3 was as unexpected as it was welcome. Richard Smith looked to have a won position on board one, but it all fell apart and he went on to lose.

The team went through in the Homer against a weak Walsall III side, but only just. They now face South Birmingham III in the next round, which will be equally tough.

Division 2B have fared less well, but have had 2 matches postponed. They also drew with Stourbridge, but were trounced by Birmingham and Sutton Coldfield. Their only other point came from a draw with Halesowen.

Division 5 are top with 10 points from 8 matches. Recently, they have beaten Kynoch, Bushbury and Mutual Circle.

Richard Liszewski has been doing the business on top board and there has been a welcome return to the team for Tony Goldwater, winning three games out of four. Stuart Bradley has also been contributing to the team's success, winning against Bushbury, Mutual and Warley. The team narrowly missed out against Warley and drew with Redditch. They had a bye in round 2 of the Townshend Trophy and now face Mutual IV in the next round.

Division 6 have managed to field a team all season so far, with a small pool of players. They have won one match, drawn 2 and lost three, but are battling on.

After a bright start and 2 wins, Mick Kerr has become the board 2 draw specialist, but all the team's players have contributed.

LATEST RESULTS

Division 1

Olton 3½-5 Stourbridge II
Shirley 3-3 Olton

Division 2A

Solihull 4½-1½ Olton
Olton 4-3½ Walsall III
Stourbridge 3-3 Olton
Olton 2½-3½ Birmingham

Division 2B

Olton 3-3 Stourbridge
Birmingham 5-1 Olton

Division 5

Olton 4½-1½ Mutual Circle
Warley Q 3½-2½ Olton

Division 6

Olton 2-2 WM Police
Greenlands 2½-1½ Olton

Olton 1A

Olton 2½-1½ Nuneaton
Leamington 2½-1½ Olton

Olton 1B

Olton 2½-1½ Banbury
Olton 1½-2½ Shirley

Olton 2C

Olton 1½-2½ Kenilworth
Olton 1-3 Solihull Checkmates

Kynoch 3-3 Olton
Olton 4½-1½ Tamworth

Tamworth 2½-3½ Olton
Olton 3½-2½ Shirley
Warley 3-3 Olton

Birmingham 5-1 Olton

Olton 3-3 Shirley
Redditch 3-3 Olton

Wolseley 2½-1½ Olton

Olton 2½-1½ Solihull
Olton A 1½-2½ Olton B

Leamington 3-1 Olton
Olton 3-1 Kenilworth

Daventry 1-3 Olton

GAMES SECTION

Here is a game played on top board in the division 1 match against Tamworth. Notes are from Phil Holt.

WHITE P.Holt	BLACK P.Briggs
-------------------------------	---------------------------------

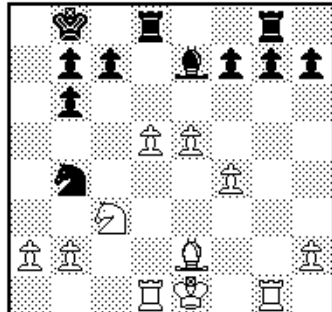
- | | |
|------------|--------------|
| 1. e4 | Nc6 |
| 2. d4 | d5 |
| 3. e5 | Bf5 |
| 4. Nf3 | Qd7 |
| 5. c3 | f6 |
| 6. Bb5 | a6 |
| 7. Bxc6 ?! | Qxc6 |
| 8. Be3 | g5 |
| 9. Qe2 | O-O-O |
| 10. O-O | h5 |
| 11. Rc1 | g4 ?! (h4 !) |
| 12. Nh4 | e6 ?! |
| 13. c4 | fxe5 |
| 14. cxd5 | Qxd5 |
| 15. Nc3 | Qa5 |
| 16. d5 ! | Bd6 ? |
- (White was threatening Bg5 and Qxe5, but this is very bad for Black. Better was 16...Ne7 17.Bg5 e4)
- | | |
|----------------------------------|---------|
| 17. a3 (White is now winning) | |
| 17. | c5 |
| 18. dxc6 (b4 ! is even stronger) | |
| 18. | b5 ? |
| 19. b4 | Qc7 |
| 20. Nxf5 | exf5 |
| 21. Nd5 | Qf7 |
| 22. c7 | Resigns |

Now, here's a game from the drawn Division 2A match against Stourbridge.

WHITE R.C.Reynolds	BLACK E.Horwill
-------------------------------------	----------------------------------

- | | |
|----------|-------|
| 1. P-K4 | N-KB3 |
| 2. P-K5 | N-Q4 |
| 3. P-Q4 | P-Q3 |
| 4. P-QB4 | N-N3 |
| 5. P-B4 | PxP |
- The four Pawns attack in Alekhine's Defence. Played many times against this opponent and yet to yield a win.
- | | |
|----------|--------|
| 6. BPxP | B-B4 |
| 7. B-K3 | P-K3 |
| 8. N-KB3 | N-B3 |
| 9. N-B3 | B-KN5 |
| 10. B-K2 | BxN |
| 11. PxP | Q-R5ch |
| 12. B-B2 | Q-B5 |
| 13. Q-B1 | QxQch |
| 14. RxQ | O-O-O |

- | | |
|----------------------------|-------------|
| 15. R-Q1 | B-K2 (N-R4) |
| 16.P-B5 N-Q4; 17. NxN RxN) | |
| 16. R-KN1 | KR-N1 |
| 17. P-B4 | K-N1 (B-N5) |
| 18.P-QR3 BxNch; 19.PxB | |
| N-R4; 20 B-R4) | |
| 18. P-Q5 | PxP |
| 19. PxP | N-N5 |
| 20. BxN | RPxN |



- | | |
|----------|------|
| 21. B-B4 | B-B4 |
|----------|------|
- (P-KN4 is possible, although White does not have to take it – eg 22.K-K2 PxP;23.RxR RxR; 24.P-Q6)
- | | |
|---|---------|
| 22. R-N3 (R-N2 was slightly more accurate, preventing N-B7ch) | |
| 22. | R-Q2 |
| 23. R-Q2 | P-N3 |
| 24. P-QR3 | N-R3 |
| 25. P-N4 (N-K4 also possible) | |
| 25. | B-K2 |
| 26. R-R3 | P-R4 |
| 27. R-KN2 | R(2)-Q1 |
| 28. P-B5 !? (P-Q6 is winning. If PxP; 28.BxP R-N2; 29.P-K6 P-Q4; 30.P-B5) | |
| 28. | PxP |
| 29. RxR | RxR |
| 30. RxP | R-N5?? |

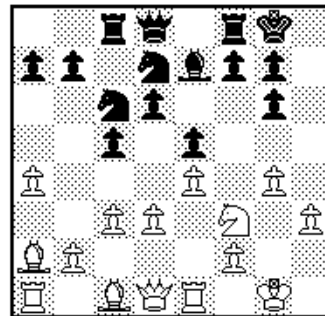
(Black was looking at NxP; 31.PxN BxP, but K-Q2 ends this. 30...B-N4; 31.P-Q6 wins)

31. R-R8 ch	K-R2
32. N-N5 mate	

Finally, we have a game from the Division 2A match against Sutton Coldfield. Richard Smith and Trevor Holt won on boards 1 and 3 and this game contributed to the match win.

- | | |
|---------------------------------|-------------------------------------|
| WHITE
K.Escott | BLACK
R.C.Reynolds |
|---------------------------------|-------------------------------------|
- | | |
|----------|-------|
| 1. P-K4 | P-K4 |
| 2. B-B4 | N-KB3 |
| 3. P-Q3 | N-B3 |
| 4. N-KB3 | B-K2 |
| 5. O-O | P-Q3 |
| 6. P-QR4 | O-O |
| 7. R-K1 | B-N5 |
| 8. P-R3 | B-R4 |
| 9. P-B3 | N-R4 |

- | | |
|-----------|----------|
| 10. B-R2 | P-B4 |
| 11. P-KN4 | B-N3 |
| 12. N-R4 | N-Q2 |
| 13. NxP | RPxN |
| 14. N-Q2 | R-B1 |
| 15. N-B3 | N-QB3 (A |
- long think resulted in this move. Black is likely to get crushed on the King's side and has few moves. This is a logical re-centralisation of the Knight and was considered the best move by White)



- | | |
|----------|---|
| 16. B-K3 | Q-B2 |
| 17. N-N5 | N-Q1 (The point of Q-B2. The plan is to exchange on KN4 and then play N-K3) |
| 18. Q-B3 | BxN |
| 19. BxB | N-K3 |
| 20. B-K3 | Q-Q1 |
| 21. Q-N3 | P-N4 |
| 22. Q-B3 | Q-B3 |
| 23. QxQ | PxQ |
| 24. K-N2 | K-N2 |
- Draw agreed

LEAMINGTON LEAGUE NEWS

We have already heard about the B team's win over the A's but both teams have had mixed fortunes during the first half of the season.

The 1A team have won three matches so far, drawing two and losing another three. Their most notable success was against Kenilworth, who fielded a good side. Only Rob Wallman was unable to score a win, Phil Holt sacrificing in spectacular fashion on board 1. Alan Lloyd went Queen for rook & Bishop up and struggled to find a way through, but eventually succeeded. Mark Cundy won a piece early on and went on to win comfortably. Wins against Nuneaton and Solihull were less convincing,

PUZZLE CORNER

The puzzle published in Newsletter 85 was by Ron Fenton and was White to play and mate in 13. :

1. a5 a6 2. Bb1 axb5 3. a6 b4
4. a7 b3 5. a8=N b2 6. Nb6 {It seems that Fritz 7 does not even realise there is a mate until around here! The concept of under-promotion appears to be missing from its calculations! And even here, it states it is mate in 7 but still wants to promote to a queen on c8 on move 8! There's still hope for us all...}
- 6... cxb6 7. c7 b5 8. c8=N b4 9. Na7 b3 10. Kg4 h3 11. Nc6 h2 12. Nd8 h1=Q 13. Nf7 mate.

TWMC

SUBSCRIPTIONS

Please note that subscriptions for Tyseley WMC membership are due by the end of January. If you have not paid yours to John Clulee, please make sure you renew it by the end of the month, or pay the money to me so that I can renew it for you.

although Alan Lloyd had a good win against Maurice Staples in the former. The 1B side have had some notable successes, beating Banbury and Kenilworth. Oh, and did I mention Olton A !? They had a rather predictable loss against Shirley, but on closer inspection, Richard Reynolds' game against Don Mason on board 1 may well have been drawn. Their points tally so far is 7 from 8 matches.

The 2C team have had a couple of setbacks, after their early winning run. They have beaten Leamington and Daventry, but have lost to Kenilworth and Solihull Checkmates. This last match was nothing short of a disaster, the opposition's middle order really shouldn't have got a look-in. The Daventry match saw a good win on top board for Gary Hope against a strong opponent. The team currently have 10 points out 14.

Richard Reynolds