



OLTON CHESS CLUB



NEWSLETTER 89 OCT 2008

SEASON 2008-09

The new season has opened with some tough clashes in both the Birmingham and Leamington Leagues. BDCL division 1 have played Shirley and have already lost a match against the League Champions, South Birmingham A. They have drawn with their B side. Division 2A and B have both faced promotion hopefuls Tamworth A, with nothing to show for it in each case. Division 2 is unique in having no less than 4 B teams within its number, so the League will be very competitive this season. Division 4 have lost to Mutual Circle and Division 6 to Redditch. In the Leamington League, both the A and B teams have been fortunate to find League Champions Shirley on an off-

night, while the C team had a tough match against Banbury B. Olton B have scored two draws, one win and one loss so far, narrowly losing to Stratford. Olton A have won two matches over the board and one by default. Our teams in the BDCL have had generally good form in the cup. Division 1 won a tricky tie against Boldmere St Michaels III in the Terrill Trophy. Division 2A had a bye in the first round and the two teams meet in round 2. Division 4 were giving half a point to their opponents Boldmere V, but managed to win through in the end in the Townshend. Only Division 6 failed to win in round 1, losing to South Birmingham V. They now go into the Barrington Trophy.

OPENING RESULTS

Division 1

South B'ham A 5-1 Olton
Olton 3-3 South B'ham B

Division 2A

Olton B 1-5 Olton A
Tamworth A 3½-2½ Olton

Division 2B

Olton 1½-4½ Tamworth A
Olton 1½-2½ West Brom (2 left)

Division 4

Mutual 4-2 Olton
Olton 4-2½ Boldmere V

Division 6

Olton ½-3½ Redditch
South B'ham V 4½-2 Olton

Olton 1A

Kenilworth 1½-2½ Olton
Solihull Def-4 Olton

Olton 1B

Olton 2-2 Solihull
Banbury 2-2 Olton
Stratford 2½-1½ Olton

Olton 2C

Olton 2-2 Banbury B
Olton 3-1 Leamington B
Olton 2½-3½ Shirley
Boldmere III 4-5½ Olton
Olton 3-3 Boldmere
Tam. B 3½-2½ Olton
Olton 3-3 Northfield Ch
Kynoch ½-3½ Olton
Olton 3½-½ Shirley
Olton 4-Def Kenilworth
Shirley 1-3 Olton
Shirley B 1½-2½ Olton

FRIENDLY MATCHES

The two annual friendly matches against local clubs were held during August. Olton beat Shirley 9-4 at home in the first match, but it was business as usual at Moseley all Services club, as the home team romped to a 14½-4½ victory. In the Shirley match, there were wins for Olton throughout the line-up, with just two players losing. Meanwhile, there were just two wins against South Birmingham in the second match. A handful of draws indicated the strength advantage the home team had. Here is a game from the match.

WHITE D.Brown

1. P-K4
2. N-KB3
3. P-Q4
4. NxP
5. B-K3
6. QxN
7. Q-Q2
8. B-QN5
9. O-O
10. N-B3
11. BxBch
12. P-QN3

(White is given an open invitation to start a Queen's side attack.)

13. N-Q5
14. P-QN4
15. QR-N1
16. P-KB3
17. P-QR4
18. P-N5
19. RxP
20. PxN
21. P-R5
22. R-N3
23. Q-N4
24. KR-N1
25. Q-N4ch
26. B-R7
27. R-K3
28. P-Q3
29. B-Q2
30. N-K4
31. QxB
32. O-O-O
33. N-B3
34. B-B3
35. Q-K3
36. P-QR3
37. N-K2
38. PxP
39. NxN
40. Q-K2
41. KR-K1
42. K-Q2

BLACK G.Hope

1. P-K4
2. N-QB3
3. PxP
4. KN-K2
5. NxN
6. N-B3
7. B-K2

(Black's slow development looks a little unnatural, as there are plenty of squares to move to)

23. Q-N4
24. KR-N1
25. Q-N4ch
26. B-R7
27. R-K3
- R-QN1
- Q-K4
- K-K2
- R-B1
- Resigns

Now, here's a game from the Division 4 Cup game against Boldmere V.

WHITE E.Goodby

1. P-Q4
2. P-QB4
3. P-K3

(Note : Holding on to the Pawn is not a good idea)

4. N-QB3 (P-QR4 is correct)
4. P-QR3
5. Q-KB3
6. KN-K2
6. N-B3 (White must try and undermine the Black Q-side or will just be a Pawn down for nothing)

7. P-QR4
8. PxP
9. RxR
10. NxP
11. N-B3
12. Q-N3
13. P-KB3
14. K-B2 ?! (White's bizarre position results in this move, trying to free up his tangled pieces)
14. B-KN2
15. K-N1 ??
16. Q-Q6
17. N-KB4 ? (White's key defender deserts its post at a critical time)
17. PxP
18. QxQP (PxP; 19.N-K1! QxN; 20.QxQ BxPch and mates)
18. P-K4
19. QxBP
20. QxP(B4)
21. P-K4 ?
22. Q-Q2
23. Q-KB2
24. Resigns
24. B-Q5
25. Q-R8
26. N-KR4
27. Q-R2ch (Or QxR)

SOUTH B'HAM v OLTON

Jon Swindells (185) 1-0 Phil Holt (184)
 Pablo Padillo (172) 1-Def Alan Lloyd (172)
 Liam Hylands (167) 1-0 Richard Smith (154)
 Martin Smyth (161) 0-1 Mark Cundy (147)
 David Dunn (160) ½-½ Richard Reynolds (147)
 Rob Hearne (160) ½-½ Robert Reynolds (143)
 Simon Williams (154) 1-0 Robert Wallman (137)
 Neil Clarke (145) 1-0 Paul Swatridge (SB) (127)
 Darren Lee (140) 1-0 John Asbury (123)
 Gary Hope (139) 0-1 Dave Brown (120)
 Robert Glass (138) ½-½ Frank Jimenez (108)
 Tim Lane (133) 1-0 Dave Stockwin (97)
 Ralf Weber (--) 1-0 Pete Singh (81)
 Derek Stockhall (120) 1-0 Tom Evans (75)
 Geoff Perks (112) 1-0 Bramwell Garner (73)
 Ron Hardy (110) ½-½ Keith Lawson (--)
 Peter Johnson (78) 1-0 John Clulee (60)
 Brian Green (75) 1-0 Bill Yeomans (54)
 Paul Phillips (55) ½-½ Peter Simpson (52)

14½-4½

TIME- HANDICAP TOURNAMENT

Robert Reynolds has organised a knockout tournament, where the amount of time allotted to each player depends on the difference in grade between them.

This has resulted in some fraught moments in the first round. Despite these, all the stronger players won through despite having just 12 minutes per game to their opponents' 48. Nevertheless, the time constraints have been a great leveller for all concerned. Ties are played over 2 games and if scores are level after this, a decider is played. White has 6 minutes and must win, black has 5 and must at least draw.

Results so far (Round 1) :

Richard Reynolds (12 mins) 1½-½ Peter Simpson (48 mins)

Dave Cheshire (12 mins) 1-1 Peter Singh (48 mins) - D.Cheshire won tie-break.

Keith Lawson (30 mins) 2-0 Philip Corr (30 mins)

Robert Reynolds (12 mins) 2-0 Bramwell Garner (48 mins)

Mark Cundy (12 mins) 1½-½ Nigel Terry (48 mins)

Now a game from Mark Cundy, played in the 2008 Leamington League final against Nuneaton.

<u>WHITE</u> A.Green	<u>BLACK</u> M.Cundy
--------------------------------	--------------------------------

1. d4	f5
2. c4	Nf6
3. g3	g6
4. Bg2	Bg7
5. Nc3	d6
6. Nf3	O-O
7. O-O	Qe8
8. d5	Na6
9. Be3	c5
10. Qd2	Nc7
11. a4	Bd7
12. a5	b5
13. axb6	axb6
14. Rxa8	Qxa8
15. Ne1	b5
16. cxb5 (16.Bxc5 dxc5 17.d6	

COMEDY CORNER

This issue's offering is a game played in a recent A v B match.

<u>WHITE</u>	<u>BLACK</u>
1. P-K4	P-K4
2. N-KB3	N-QB3
3. P-Q4	PxP
4. P-QB3	PxP
5. NxP	B-N5
6. B-QB4	P-Q3
7. Q-N3	BxNch
8. PxB	Q-K2
9. O-O	N-B3
10. P-K5	PxP
11. B-R3	Resigns

with an unclear position)

16.	Nxb5
17. Nc2	Rb8
18. Bxc5 (This just gives a bishop away now)	
18.....	Nxc3
19. bxc3	dx5
20. d6	Bc6
21. Ra1	Bxg2
(21...Qb7 22.Bxc6 Qxc6 leaves black a piece up)	
22. Rxa8	Bxa8
(Black has collected more than enough pieces for the queen)	
23. f3	Rd8
24. Qe3	exd6
25. Qe6+	Kf8
26. Ne3	Bb7
27. Qb3	Bc8
28. Qb6	Ke7
29. Nc4	Ne8
30. Qa7+	Rd7
31. Qb8	Bb7
32. Nb6	Rc7
33. Na8	Bxa8
34. Qxa8	Bxc3
35. Qd5	Bd4+
36. Kg2	Nf6
37. Qa8	c4
38. Qh8	d5
39. e3	Bb2
40. Qb8	Be5
41. Qb4+	Ke6
42. f4	Bd6
43. Qc3	Rb7
44. Qa5	Ne4
45. Qd8	c3
46. Qe8+	Re7
47. Qc8+	Kf6
48. Qf8+	Ke6
49. Qc8+	Kf7
50. Qh8	c2
51. Qxh7+	Ke8
52. Qxg6+	Kd8
53. Qg8+	Kd7
54. Resigns	

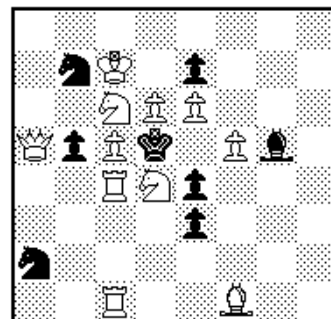
PUZZLE CORNER

The last puzzle from Phil Holt was a mate in 3 in Newsletter 88. The solution was as follows:

1. Kc3! The key move. Bxg7 is a good try but then ...e5 and it is mate in 4. Similarly, Qxg7? Qxg3ch; 2.Qxg3 Nc4 and there is no immediate mate.

1.Ne4 ch
 (orQxg3ch; 2.Bf3ch Rxc7; 3.Bd4 mate;
 1....Nf7; 2.Be4ch Bc6;
 3.Qxc6;
 1....Na7; 2.Bd7ch Kd5;
 3.Qxd6; 1...Rg4; 2.Bd7ch Kd5; 3.Qc6;
 1....e5; 2.Bd7ch Kd5; 3.Qc6;
 1....Nxb6; 2.Qxb6;
 1....Nxb5ch; 2.Rxb5;
 1....Rxd7; 2.Bd4;
2. Bxe4 Rxc7
3. Bd4 mate

Now, here is this issue's puzzle from Phil, which he composed himself. It is White to play and mate in 2.



The answer will be given in the next newsletter.

Richard Reynolds

OLTON V SHIRLEY

Phil Holt (184) 1-0 Bob Walker (150)
 Richard Smith(154) ½-½ Dave Thomas (144)
 Mark Cundy (147) 1-0 Aled Waker (131)
 Robert Wallman (137) ½-½ Jonathon Dale (127)
 Trevor Holt (134) ½-½ John Asbury (123)
 Steve Chadaway (117) 1-0 Ken Warren (116)
 Dave Stockwin (97) 1-0 Kim Gilbert (114)
 Robert Reynolds (144) ½-½ Gordon Christie (113)
 Mick Kerr (79) 0-1 Frank Jimenez (108)
 Tom Evans (75) 1-0 Mike Warden (100)
 Bramwell Garner (73) 1-0 Richard Simpson (45)
 Keith Lawson (--) 1-0 Courtney Kerr (62)
 Bill Yeomans (49) 0-1 Roger Ball (--)

9-4