



# OLTON CHESS CLUB



## NEWSLETTER 90 JAN 2009

### HALF WAY THERE

At the half-way point in the season, our teams have had mixed fortunes in the Leagues and competitions.

The Division 1 Birmingham League team seems to have hardly got started, with only five matches played and just three points to show for it. Its Leamington League counterpart, on the other hand, has won all seven matches so far.

The BDCL 2A team started well, but has lost a couple of matches recently and the pattern is repeated in the LDCL 1B team's scores.

The Birmingham League 2B side is struggling to say the least, with one point from 6 matches. The LDCL 2C side is doing a little better, having won some matches and they have beaten Stratford in the

Under 625 knockout trophy round 1.

The BDCL Division 4 team settled in after a shaky start, scoring several narrow wins. However, they lost to Shirley V in the cup and were trounced 5½-½ by Rushall in their last League match.

Division 6 have seen most of its matches won or lost by a decisive score, its worst result a 4-0 drubbing by Tamworth away from home. The team also went through Round 1 of the Barrington Trophy, beating Kynoch V.

We also take this opportunity to welcome Nigel Terry to the club. Nigel played his first match against Shirley, not a successful venture, but as they say, things can only get better. We wish a happy new year to all our members.

### MEMBERS GAMES

We start with a game from the Olton 2B v West Bromwich match.

#### WHITE

**J.E.Crump**

1. e4
2. d4
3. exd5
4. c4
5. Nf3
6. Be2
7. O-O
8. Nc3
9. c5
10. Bf4
11. Qc2
12. Bd2
13. Ne5
14. Bxh5

*Ng4; 15.Bxg4 Bxg4)*

15. Bc1

16. b3
17. Ne2
18. Bf4
19. Rad1
20. Be5
21. dxe5
22. f4
23. Qc3
24. Nd4
25. Qe3
26. h3
27. Nxf5
28. Bg4
29. exf6
29. ....
30. Rfe1
31. Rxe1
32. Bd7
33. Bxc6
34. Re8+
35. Bxe8
36. Bc6
37. Kf2
38. Ke3
39. Kd4
40. Bb7

*Rde1 keeps up the pressure)*

29. .... Rxe3
30. Rfe1 Rxe1
31. Rxe1 Nb7
32. Bd7 Nxc5
33. Bxc6 Rd8
34. Re8+ Rxe8
35. Bxe8 Ne4
36. Bc6 Nxf6
37. Kf2 Kf8
38. Ke3 Ke7
39. Kd4 Kd6

*Draw agreed*

Now, a game from Tom Evans, which proved decisive in the Under 625 cup match against

Stratford.

#### WHITE

**T.Evans**

1. P-K4
2. P-Q4
3. N-KB3
4. P-QB3
5. B-K3
6. N(1)-Q2
7. N-N3
8. P-KR3
9. B-Q3
10. Q-Q2
11. N-B1
12. N-K2
13. B-B2
14. N-N3
15. P-K5
16. NxN
17. N-N5
18. NxP(K4) ? (NxRP KxN {or BxB; 19.N-B6ch} ; 19. BxB)
18. .... BxB
19. QxB ? (Still N-B6ch and PxB and white's stranglehold on the K-side is decisive)
19. .... N-B4
20. N-B6ch (Too late)
20. .... QxN
21. PxQ NxQ
22. PxN BxNP
23. R-R2 B-N2
24. P-K4 P-QN4 ?
25. P-K5 P-QR4
26. P-KR4 P-R4
27. O-O-O B-Q4
28. R(1)-N1 K-R2
29. R-N5 K-R3
30. R-R3 R-KN1
31. R(3)-N3 QR-KB1
32. B-Q1 K-R2
33. B-B2 (?) K-R3
34. B-Q1 K-R2
- (White now sees the breakthrough)
35. BxP ! K-R3
36. B-Q1 K-R2
37. B-B2 K-R3
38. P-R5 P-N5
39. BPxP RPxP
40. PxP P-N6
41. R(5)-N4 B-B6
42. R-R3 mate

#### BLACK

**B.Vince**

- P-Q3
- P-KN3
- B-N2
- P-K3
- N-K2
- N-Q2
- O-O
- P-QN3
- B-N2
- R-QB1
- P-QB4
- P-B5
- N-KB3
- P-Q4
- N-K5
- PxN
- B-KR3 ??
- BxB
- N-B4
- QxN
- NxQ
- BxNP
- B-N2
- P-QN4 ?
- P-QR4
- P-R4
- B-Q4
- K-R2
- K-R3
- R-KN1
- QR-KB1
- K-R2
- K-R3
- K-R2
- K-R3
- P-N5
- RPxP
- P-N6
- B-B6

### LATEST RESULTS

#### Division 1

Wolverhampton 2-4 Olton                      Olton 1-3 Halesowen

#### Division 2A

Olton 3-3 Tamworth B                      West Brom 3-3 Olton

Olton 1½-4½ South B'ham                      Warley A 3½-2½ Olton

Olton 4½-1½ Warley B                      Olton IIA 5-3½ Olton I

#### Division 2B

Olton 2-4 West Brom                      South B'ham 3-3 Olton

Stourbridge A 3½-1½ Olton (1 left)

#### Division 4

St. Georges 4½-1½ Olton                      Olton 3½-2½ Sutton C.

Olton 3½-2½ Warley Quin.                      Mercia 2½-3½ Olton

Shirley V 4-2½ Olton IV                      Rushall 5½-½ Olton

#### Division 6

Olton ½-3½ Greenlands                      Tamworth 4-0 Olton

Kynoch/Barn V 3-3½ Olton VI                      Olton 3-1 Solihull

#### Olton 1A

Olton 3-1 Leamington                      Olton B 1½-2½ Olton A

Olton 3-1 Stratford                      Olton 3-1 Banbury

Olton 3-2 Leamington (Open cup)

#### Olton 1B

Olton 1½-2½ Leamington                      Leamington 3-1 Olton

#### Olton 2C

Kenilworth 2½-1½ Olton                      Olton 3-1 Daventry

Stratford 3-1 Olton                      Olton 2½-1½ Sol Chkm

Stratford 1½-3½ Olton (U625 cup)                      Olton 2-2 Shirley

# TIME- HANDICAP TOURNAMENT

This has continued into the second round and a plate competition is under way for first round losers.

## Further results (Round 1) :

**Jim Gillespie (12 mins) 2-0  
Bill Yeomans (48 mins)**

**Tom Evans & John Clulee  
Byes**

## Round 2

**Mark Cundy (18 mins) v Jim  
Gillespie (42 mins)**

**Richard Reynolds (12 mins)  
2-0 Tom Evans (48 mins)**

**Robert Reynolds (12 mins)  
2-0 John Clulee (48 mins)**

**Keith Lawson (48 mins) 1½-  
½ Dave Cheshire (12 mins)**

## Plate Round 1

**Bramwell Garner (30mins)  
2-1 Nigel Terry (30mins)**

**Pete Singh (18 mins) 2-1 Bill  
Yeomans (42 mins)**

**Philip Corr & Peter Simpson  
byes**

## Plate Round 2

**Pete Singh (24 mins) v  
Peter Simpson (36 mins)**

**Philip Corr (36 mins) v  
Bramwell Garner (24 mins)**

Here is a game from the Olton 1 v 2A cup match, played earlier this season.

**WHITE                      BLACK**  
**Rob Reynolds   S.Chadaway**

1. Nf3                      Nf6  
2. b3                        g6  
3. Bb2                      Bg7  
4. g3                        d5  
5. Bg2                      O-O  
6. O-O                      c5  
7. d4                        cxd4  
8. Bxd4                    Nc6  
9. Bb2                      Qc7  
10. Na3                    a6  
11. c4                        dxc4  
12. Nxc4                   Rd8  
13. Qc1                    Nd7 ? (This hampers black's development and creates a weakness on the long diagonal. Bf5 or Be6 are better)  
14. Bxg7                   Kxg7

# TREVOR HOLT – THEN & NOW

Phil Holt annotates a recent game from his dad, Trevor and then takes a look back at how it was done in the old days. The first game was played in the Division 2B match against West Bromwich. John Llewelyn, please take notes.

**WHITE                      BLACK**  
**M.Uddin                    T.J.Holt**

1. e4                        e5  
2. Nf3                      Nc6  
3. Bc4                      Nf6  
4. d3                        Bc5  
5. O-O                      d6  
6. h3                        h6  
7. Nc3                      a6  
8. a4                        Bd7  
9. Bd2                      g5  
10. Ne2 ?! (Better was 10. Nd5 g4 11. hxg4 Bxg4 12. Be3 to cut out the black bishop on c5)  
10.....                      g4  
11. hxg4                    Bxg4  
12. c3 ?? (Essential was 12. Nh2 when black keeps an edge)  
12.....                      Nh5 ?

## PUZZLE CORNER

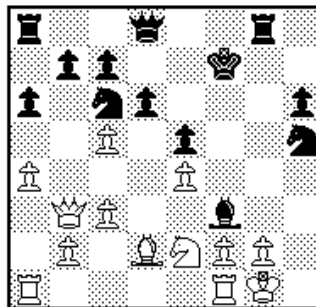
The last puzzle from Phil Holt was a mate in 2 in Newsletter 89. The solution was as follows:

**1. Ne2**, threatening Rd4  
1. ....Bf6; 2. Nf4  
1. ....bxc4; 2. Rd1  
1. ....Nxc1; 2. Nc3  
1. ....Nc3; 2. Nxc3  
15. Qb2+                    Kg8 (Black would best return the Knight to f6, but is committed to the weakness on the e5 square)  
16. Rac1                    b5 (Nf6 still best)  
17. Ne3                      Bb7  
18. Nd5 (Rfd1 or Nd4 are possibly better)  
18. ....                      Qb8 ? (This is just losing – Qd6; 19. Rfd1 Nf6; 20.Ng5)  
19. Rxc6 !                    Re8  
20. Rc7                      Bxd5  
21. Rxd7                    e6 ?? (Bc6 is the only move)  
22. Qf6                      Rf8  
23. Ne5                      Resigns

(But this lets white off the hook. After 12... Bxf3 13. gxf3 Rg8+ 14. Kh2 Nxe4 ! black wins easily)

13. d4 ? (Again 13. Nh2 was necessary)

13.....                      Bxf3  
14. dxc5                    Rg8  
15. Bxf7+                   Kxf7  
16. Qb3+



16. ....                      Ke7  
17. Ng3                      Qf8  
18. Bxh6 ?                   Qxh6 !  
19. Nf5+                    Kf6  
20. g3 (20. Nxb6 ? allows Rxb2+ 21. Kh1 Rxf2+ 22. Kg1 Rg2+ 23. Kh1 Ng3#)  
20.....                      Qh7  
21. cxd6                    Nf4

and white resigned as mate is forced **0-1**

And now, we go back to a game from 1984, with notes again from Phil.

## A SACRIFICE TOO FAR?

Most of you will be familiar with Trevor's attacking sacrificial style (see previous game), but let me show you how it was in the Good Old Days! I remember watching this game at the Chelmsford Congress as a 13 year old and being completely astonished. So please just sit back and be entertained, don't over-analyse and whatever you do, don't play like this in your league games!

**WHITE                      BLACK**  
**S.Jacob                    T.J.Holt**

1. e4                        e5  
2. Nf3                      Nc6  
3. Bb5                      a6  
4. Ba4                      Nf6  
5. O-O                      Be7  
6. Bxc6                    dxc6  
7. Nc3                      O-O !?  
(Firstly, a pawn)

8. Nxe5                      Bd6  
9. Nf3                      Re8  
10. d3                      Bg4  
11. h3                      Bh5  
12. g4                      Nxc4 !?  
(Now the knight goes)  
13. hxg4                    Bxg4  
14. Kg2 ?!                   Re6  
15. Ne2                      Rf6  
16. Nfg1 ?                   Rg6  
17. f3                      Qh4 ?! (Now a bishop, but 17... Bh3+ ! wins for black as 18. Kxh3 ? allows mate)  
18. fxg4                    Qxg4+  
19. Kf2                      f5  
20. Nf4 ?!                   Bc5+ ?!  
21. d4                      Qg3+  
22. Ke2                      Re8  
23. e5                      Rh6  
24. Nf3                      Rh2+ !?  
(Let's throw a rook on the fire)  
25. Nxb2                    Qxb2+  
26. Kd3 (26. Rf2 ! Rxe5+ ! 27. Be3 ! was better)  
26.....                      Bxd4  
27. Qe2                      Qh4  
28. Kxd4                    Qd8+  
29. Kc3 (A rook, bishop and knight down with no compensation - where do we go from here?!)  
29. ....                      b5  
30. Rd1                      Qe7  
31. b3                      Qc5+  
32. Kd2 ?!                   Rxe5  
33. Qxe5 ?                   Qxe5  
34. Nd3                      Qxa1 !  
35. Bb2                      Qxa2  
36. Ra1                      Qxa1  
37. Bxa1                    g5  
38. b4                      Kf7  
39. Ne5+                    Ke6  
40. Nxc6                    h5  
41. Nb8 ?!                   h4  
(Shouldn't white do something about those pawns?!)  
42. Ke3                      f4+  
43. Kf3                      Kf5  
44. Nxa6 ? (The last chance is the return the knight from exile with 44. Nc6 when white still has an edge)  
44.....                      g4+  
45. Kg2                      f3+  
46. Kf1                      h3  
47. Kg1                      g3  
48. Bd4                      h2+  
49. Kh1                      Kg4  
and white threw in the towel and went to the bar. It is mate in 3 more moves.

**0-1**  
*Richard Reynolds*