



# OLTON CHESS CLUB

## NEWSLETTER 91

APR 2009



### LEAGUE CHAMPIONS

With three matches to spare, Olton A have won the Leamington League title, for the tenth time since joining the League. The formalities were completed against an admittedly average Shirley side, compared to that which won last year.

This season has seen some ups and downs, very close matches and near misses, but the team left it until the penultimate match of the season to lose. Previously, the team had recorded victories against Banbury, Olton B and Stratford. Congratulations to the team.

Meanwhile, there is the chance to complete a League & Cup double. The Open Cup team won their Semi-Final against Stratford, albeit with a little help from the opposition. The final is at Leamington on Tuesday 28<sup>th</sup> April and will be against Banbury.

Another date in the Leamington League diary is Wednesday 22<sup>nd</sup> April. The Annual 5-minute tournament will take place at Solihull's venue, the Blossomfield club. Play will commence at 7:30pm and there will be 9 rounds. There will be an Open section and one for players under 125.

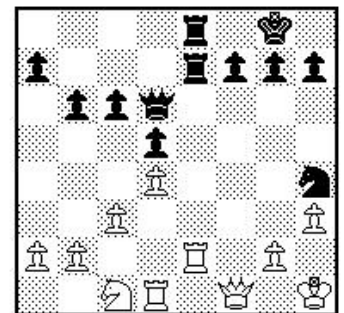
### BDCL LIGHTNING

The annual Birmingham League Lightning Tournament was again held at Olton's venue on Tuesday 10<sup>th</sup> March. 14 teams competed in two sections at the rate of 10 seconds per move. Olton entered 4 teams and two went into each section. Olton A started better than usual rivals South Birmingham A, but had a disastrous encounter with them in round 2. They eventually finished second by some margin. The B team started more slowly, but eventually beat their opposite numbers at South Birmingham 3½-½, finishing equal 3<sup>rd</sup>.

In section B, Olton C and D found it hard going against some more experienced teams. The C team rallied at the end, while the D's picked up odd points here and there. Nevertheless, it was an enjoyable evening for all those taking part.

Here is a game from the recent Leamington League Division 2 match against Daventry.

- |         |  |
|---------|--|
| 19. Qf1 | Nh4 ( <i>Rae8 looks more natural</i> ) |
| 20. Rf2 | Rae8                                   |
| 21. Nb3 | b6                                     |
| 22. Rd1 | Re7                                    |
| 23. Nc1 | Rfe8                                   |
| 24. Re2 | Qd6                                    |
| 25. Kh1 |  |



- |             |   |
|-------------|---|
| 25. ....    | f6 ( <i>Rxe2</i> )  |
| 26. Nxe2    | Qg6 would be an improvement)  |
| 26. Qf2     | Qg6   |
| 27. Rxe7    | Rxe7  |
| 28. Ne2     | h6  |
| 29. g3      | Qe6   |
| 30. Ng1     | Qe4 +   |
| 31. Kh2     | Kf7   |
| 32. Nf3     | Qe2   |
| 33. Kg1     | Re5   |
| 34. Qxe2    | Rxe2  |
| 35. Rd2     | Rxd2  |
| 36. Nxd2    | Ke6 ( <i>With an extra pawn and the Q-side locked up, the Black Knight comes into its own</i> ) |
| 37. Kg2     | Ne7   |
| 38. Kf3     | f5  |
| 39. g4      | g5  |
| 40. gxf5    | Kxf5  |
| 41. Nf1     | h5  |
| 42. Ne3 +   | Kf6   |
| 43. b4      | Nf5   |
| 44. Ng2     | b5  |
| 45. a3      | a6  |
| 46. Kf2     | Nd6   |
| 47. Ne3 ?   | ( <i>This is not the best move, but a pawn is lost anyway</i> )                                 |
| 47. ....    | Ne4 +   |
| 48. Kf3     | Nxc3  |
| 49. Kg3 ?   | Ne2 +   |
| 50. Kf2     | Nxd4  |
| 51. Kg3     | Nf5 +   |
| 52. Resigns |   |

### LATEST RESULTS

#### Division 1

Solihull 1½-4½ Olton	Olton 2-4 Halesowen
Bushbury 2½-3½ Olton	Olton 4½-1½ Kynoch
Olton 2-4 Walsall Kipping	Sutton 1-3 Olton
South B'ham C ½-3½ Olton	

#### Division 2A

Olton 3½-2½ Stourbridge A	Olton 4-2 Lichfield
Stourbridge B 2½-3½ Olton	Birmingham 2-4 Olton
S.B'ham 1A 4½-4 Olton	

#### Division 2B

Olton 3-3 Stourbridge B	Lichfield 2½-3½ Olton
Olton ½-Birmingham 5½	Boldmere 4½-1½ Olton
Olton 0-6 Warley Quin A	Warley B 1½-2½ Olton

#### Division 4

Olton 4-2 Wolverhampton	Olton 4-2 Birmingham
Westminster 1½-4½ Olton	Olton 1-3 South B'ham

#### Division 6

Olton VI 6-Def Westminster IV	Boldmere A 3½-½ Olton
Sutton C IV 4-3½ Olton VI	WM Police Def-6 Olton
Olton 2½-1½ Boldmere B	

#### Olton 1A

Olton 3-1 Solihull	Olton A 2½-1½ Olton B
Banbury 1½-2½ Olton	Stratford 1-3 Olton
Leamington 2½-1½ Olton	Shirley ½-3½ Olton
Olton 3½-1½ Stratford (Open KO Semi-final)	

#### Olton 1B

Kenilworth 1½-2½ Olton	Olton B 1½-2½ Banbury
------------------------	-----------------------

#### Olton 2C

Sol Checkmates 3½-½ Olton	Olton 2½-1½ Stratford
Daventry 1-3 Olton	Leamington 2-2 Olton
Shirley (Cup) 3-2 Olton	Olton 4-0 Chip Cam
Chip Cam 4-Def Olton	

#### WHITE

##### A.Eley

1. e4
2. Nf3
3. exd5
4. d4
5. h3
6. Bd3
7. Bxf5
8. O-O
9. Re1
10. c3
11. Be3
12. Nbd2
13. Bg5
14. Bxf6 (*Qb1 or Qb3 equalise*)
14. ....
15. Nh2 ? (*Qc2 or Qb3 again*)
15. ....
16. Kxh2
17. Rf1
18. Rf3

#### BLACK

##### A.Cottom

1. e6
2. d5
3. exd5
4. Bd6
5. Bf5
6. Qd7
7. Qxf5
8. Ne7
9. O-O
10. c6
11. Nd7
12. Nf6
13. Ng6
14. Qxf6
15. Bxh2 +
16. Qxf2
17. Qe3
18. Qe6

## BIRMINGHAM LEAGUE ROUND-UP

Birmingham League Division 1 are currently equal 5<sup>th</sup>, with 11 points from 10 matches. They have at least a point from the Sutton Coldfield match, with two games still in progress. They have had 2 good wins recently against Kynoch/Barn and Solihull. Division 2A have completed their season, with a win over Birmingham. They finished with 15 points from 12 matches, following a good run in the latter half of the season. The team should have got through to the Terrill Final, when their match against a weakened South Birmingham 1A side looked to be going in their favour. Unfortunately, it wasn't to be, but the final opponents Warley 2A would have been a challenge. Division 2B have had a tough season and are near the bottom of the table. The team have put in some good performances, coming away with just 4 points from 11 matches. The closing matches in the division will decide the team's fate. Division 4 have performed well, winning 6 matches and drawing one. Considering the team's relative strength and use of reserves, this has been a great performance by everyone concerned. Division 6 have 8 points with one match remaining. Again, considering the level of opposition in the division, a half-way position at the end of the season is to be congratulated. The team should have made it to the final of the Barrington Trophy, but a combination of factors conspired against the team. John Clulee's adjournment, which had looked lost going into the second session, proved to be more playable than at first thought. John got into a winning position, but the quickplay finish got in the way and he unfortunately lost, what had turned into an epic game.

Here is a game from the Division 2A trophy match against South Birmingham 2. The League match a few weeks earlier had been won by SB.

<u>WHITE</u> <b>RC Reynolds</b>	<u>BLACK</u> <b>D.Lee</b>
1. P-K4	P-QB4
2. N-KB3	N-QB3
3. P-Q4	PxP
4. NxP	N-B3
5. N-QB3	P-K4
6. N(4)-N5	P-Q3
7. N-Q5	NxN
8. PxN	N-N1
9. B-Q3	<i>(An earlier game between the two players went 9.P-QB4 and this pawn eventually won the game, after reaching QB7. B-Q3 and B-K3 are both considered better)</i>
9. ....	B-K2
10. O-O	P-QR3
11. N-R3	<i>(N-B3 more accurate)</i>
11. ....	O-O
12. B-K3	<i>(Q-R5 is an interesting alternative)</i>
12. ....	P-KB4
13. P-KB3	N-Q2
14. P-QB4	B-N4
	<i>(White hopes that Black will be drawn to a K-side attack and again allow the QBP to advance)</i>
15. B-KB2	N-B4
16. P-QN4	NxB
17. QxN	P-K5 !?
18. Q-N3	<i>(Not sure whether taking the Pawn was worth the hassle, but Fritz only shows a slight advantage over Q-N3. 17....P-QR4 would have slowed White's attack)</i>
18. ....	PxP
19. QxP	B-B3
20. QR-Q1	B-K4 ? <i>(This proves to be the fatal mistake. P-QR4 was again the move)</i>
21. P-B5	R-B2 ??
22. N-B4	Q-B1
23. KR-K1	R-K2
24. PxP	BxQP
25. NxB	RxRch
26. RxR	QxN
27. R-K8ch	K-B2
28. B-B5	QxB <i>(Q-R3; 29.R-K7ch K-N1 is no better)</i>
29. PxQ	KxR
30. Q-R5ch	Resigns

Olton went on to win the match in a spectacular reverse from the earlier League match.

## LEAMINGTON LEAGUE

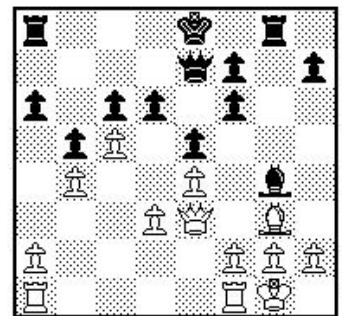
Aside from the success of the 1A team, the 1B team have been involved in a number of closely contested matches. Their 11 matches have yielded 8 points, but the team could have scored more. They are currently level with two or three other teams in the lower half of the table. The 2C team have had a topsy-turvy, but generally quite successful season. They have scored 17 points out of 14 matches. They beat Daventry thanks in part to a win from Andy Cottom which we saw earlier and bashed Chipping Campden 4-0 recently. This was played on a busy night at the club, where three BDCL finals were also being staged at the club. The Olton U625 team got to the Semi-Final, which was hastily rearranged on a Monday night at Olton. Shirley & Lucas won on the night, but there was one casualty within their team, which leads conveniently on to :

## COMEDY CORNER

<u>WHITE</u> <b>K.Gilbert</b>	<u>BLACK</u> <b>A.Cottom</b>
1. c4	e6
2. d4	d5
3. c5 ? <i>(Nf3 or Nc3 would suffice)</i>	
3. ....	b6
4. b4 ?	a5
5. Bd2 ? <i>(Bf4 or Bb2 better)</i>	
5. ....	axb4
6. Bxb5	PxP
7. PxP ? <i>(BxP is an improvement, but White is already in trouble)</i>	
7. ....	Nc6
8. Ba3 ??	Qf6
9. Nd2	Rxa3
10. Nb3 ??	Qc3+
11. Qd2 ?? <i>(Somehow, the question marks don't do the moves justice)</i>	
11. ....	Rxb3
12. Rc1	Qxd2+
13. Kxd2	Rb2+
14. Resigns	

Now, here's a game from the 2C match against Solihull Checkmates.

<u>WHITE</u> <b>K.Lawson</b>	<u>BLACK</u> <b>E.Statham</b>
1. c4	e5
2. Nc3	Nc6
3. Nf3	Nf6
4. d3	Bb4
5. e4	d6
6. Bd2	Be6
7. Be2	a6
8. Nd5	Bc5 <i>(Bxd2+;</i>
9. Qxd2 <i>Rb8)</i>	
9. O-O	b5
10. b4	Bd4
11. Nxd4	Nxd4
12. Bg5 ? <i>(f4 is an improvement)</i>	
12. ....	c6 ? <i>(Nxd5 !;</i>
13. Bxd8 <i>Nc3; 14. Qd2 Ncxe2+ is good for black)</i>	
13. Nxf6	gxf6
14. Bg4	Rg8
15. c5 <i>(or a4 bxc4; 16.dxc4)</i>	
15. ....	Bh3
16. Bg3	Nxe2+
17. Qxe2	Bg4
18. Qe3	Qe7



19. cxd6 *(Rfc1 exerts more pressure)*

19. ....	Qxd6
20. a3	f5 ?
21. exf5	Bxf5
22. Bxe5	Qe6 <i>(Qxd3)</i>
23. Rfe1	Qg6
24. Bg3+	Be6
25. Qf3 <i>(Qf5 wins quickly)</i>	
26. ....	Kd7
26. Qf4	Rc8
27. Qd6+	Ke8
28. d4	Qh5 ? <i>(This allows a good sacrifice to finish the game)</i>
29. Rxe6+ !	fxe6
30. Qxe6+	Kd8
31. Qxg8+	Kd7
32. Qg7	Kd8
33. Re1	c5
34. Qe7 mate	

*Richard Reynolds*