



OLTON CHESS CLUB

NEWSLETTER 92

AUG 2009



SEASON 2009-10 - GRADING

The new season brings with it a revised grading system that will affect League, County and Congress chess across the country. The ECF has brought into effect a one-off reflation which has seen lower grades rise more than higher ones. It had been reported that over the last few years, the grades had been stretched and that various anomalies had crept in. The reflation was intended to correct these, but the resulting list has had some unexpected effects. It is expected that it will take a season or two to settle down.

As far as Olton is concerned, Phil Holt has reached 200 for the first time and various other players have personal high grades in the 170s. Meanwhile, Bill Yeomans' grade has nearly doubled and other players have made three figures for the first time.

Whether this change will make

any difference in the long term, only time will tell. It has at least had the short-term effect of cheering everyone up. Congresses, County matches and Leagues have had to adjust grading limits for competitions, but no-one is sure whether things will ever be quite the same again.

The player registrations are given on the back page along with team formations. Opening matches are given below.

The annual friendly against South Birmingham will again open the season on Tuesday 1st September, at Olton's venue.

Technically speaking, though, we have already opened with a friendly against Shirley. This is reported elsewhere in this newsletter, although its probably best filed away under 'miscellaneous' in the loft at Tyseley WMC, given the result. Good luck to everyone for the coming season.

SUMMER TOURNAMENT 2009

With both Phil Holt and Alan Lloyd chickening out this year, the Summer Tournament promised to be one of the closest ever. And so it proved to be. All the sections were hotly contested and there were one or two surprise candidates for the section winners.

Ken Allen lead the field with 3/3, but lost the next two rounds. Richard Reynolds took the lead in round 4 with 3½, but was pegged back in round 5, losing to Robert Reynolds. Robert, Mark Cundy and Richard Smith shared the lead on 4/5, but no-one could do better than a draw in round 6. This left three players on 4½ and four on 4 points going into the last round. Keith Lawson had crept quietly up the rails and Matthew Tapp, starting slowly, was in a good position to take the title.

In one of the most unlikely passages of play imaginable, the top three could only manage half a point between them, allowing the trailing pack to level the scores at 5/7. Keith's dramatic win over Matthew was the biggest shock, but the overall result had to wait for the long grinding win by Richard Smith over John Asbury. Richard Reynolds was declared overall winner on tie-break, with Robert Reynolds second. Ken Allen was declared Major Champion and Keith Lawson won the Minor Championship.

Leading scores (out of 7)

Richard Reynolds	5
Robert Reynolds	5
Richard Smith	5
Keith Lawson	5
Matthew Tapp	4½
Ken Allen	4½
Jim Gillespie	4½
Mark Cundy	4½
Eric Ward	4
Frank Jimenez	4

Here is a game, which would normally be found in *Comedy Corner*, but was instrumental in the final result of the tournament.

Round 7

<u>WHITE</u>	<u>BLACK</u>
M.Cundy	RC.Reynolds
1. e4	e5
2. f4	exf4
3. Nf3	g5 (<i>Having realised I was playing Mark, I quickly scanned a book on the King's Gambit before leaving the house. Not that I expected to learn anything, but it's the thought that counts. And it's against the 'Spirit' according to Mark....</i>)
4. h4	g4
5. Ne5	d6 (<i>This is a good sign. Chapter 1 and I'm still in book. It's a main line [Kolisch Defence] and surely Mark knows it.</i>)
6. Nxf4	(<i>Not Nxf7 Kxf7; 7.Bc4+ Ke8, which works if Black hasn't played d6</i>)
6.	Be7 (<i>The strongest move. Black must develop quickly to stay in the game.</i>)
7. Bc4 ?	(<i>This is natural, but not accurate, as we shall see. 7.d4 is the best move</i>)
7.	Bxh4+
8. Kf1 ?	(<i>Bad, but there is little else</i>)
8.	Nc6 (<i>Qg5 is more accurate, but Black now has time to develop and this seemed natural</i>)
9. d4	Qg5
10. Nf2	Bxf2
11. Kxf2	Nf6 (<i>Now, we see the folly of 7.Bc4. The White g pawn is very vulnerable and his King is exposed to attack from multiple sources</i>)
12. Nc3	Qg3+
13. Kg1	Rg8
14. Bf1	f3
15. Resigns	

OPENING FIXTURES

Division 1

Thursday 17th September, away at Lichfield
Tuesday 29th September, home to South B'ham IA (cup)

Division 2A

Tuesday 8th September, home to Olton B
Monday 28th September, away at South B'ham II (cup)

Division 2B

Tuesday 8th September, 'away' to Olton A
Tuesday 22nd September, home to Warley Quinborne

Division 4

Monday 7th September, away at Sutton Coldfield
Tuesday 29th September, away at Redditch V (cup)

Division 6

Tuesday 8th September, away at Redditch
Tuesday 15th September, home to Warley Quinborne

Olton 1A

Tuesday 8th September, home to Solihull Checkmates
Tuesday 15th September, home to Olton B

Olton 1B

Tuesday 15th September, 'away' to Olton A
Tuesday 6th October, home to Banbury A

Olton 2C

Monday 14th September, away at Shirley B
Tuesday 29th September, home to Banbury B

Email : occinfo@blueyonder.co.uk

REGISTRATIONS

2009-10

Division 1

Phil Holt	200
Richard Smith	177
Alan Lloyd	173
Dave Gostelow	170
Robert Wallman	173
Mark Cundy	169

Division 2A

Richard Reynolds	170
Trevor Holt	162
Robert Reynolds	159
Ken Allen	152
Richard Liszewski	150
Dave Cheshire	147

Division 2B

Steve Chadaway	143
Jim McDonald	145
Jim Gillespie	136
Andy Cottom	141
Warren Archibald	140
Tom Burgess	---

Division 4

Dave Brown	134
Dave Stockwin	134
John Llewelyn	128
Keith Lawson	113
Mick Kerr	108
Bramwell Garner	93

Division 6

Pete Singh	105
Tom Evans	107
Peter Simpson	91
John Clulee	95
Nigel Terry	--
Courtney Kerr	92
Bill Yeomans	79
Tony Goldwater	87

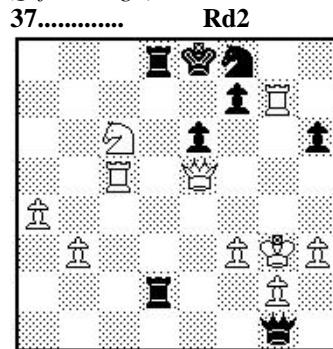
Here is a game from Richard Smith from last season. It was played against Sutton Coldfield in Division 1. The adjourned position is quite remarkable and resembles a heavily contrived 'mate in three' puzzle. Notes from Richard.

WHITE H.Stepanyan
BLACK R.Smith

1. c4	c6
2. d4	d5
3. Nc3	Nf6
4. Nf3	dx c4
5. e3	b5
6. a4	b4
7. Na2	a5
8. Bxc4 (The last book move)	
8.....	Ba6
9. Bxa6	Rxa6
10. 0-0	e6
11. Qe2	Be7
12. e4	0-0

13. Bf4	Rb6
(13...Qb6; 14.Rac1)	
14. Rac1 (14.Nc1!?)±	
14.	Nbd7
15. Rfd1	Qa8
16. Ne5	Rc8
17. Nc4	Rb7
18. Bd6	Kf8?
(18...Bf8± would be better)	
19. Bxe7+	Kxe7
20. e5	Ne8
21. Qh5	h6
22. Rd3	Nf8?? (sad, but how else could Black save the game? [22...c5 23.d5 exd5 24.Rxd5])
23. Nd6!	Nxd6
(23...Nxd6 24.exd6+ Passed pawn; 23...-- 24.Qxf7+ Mate threat)	
24. exd6+	Ke8
25. Rc5 (25.Qe5 Rd8+-)	
25.....	Qa6? (As usual, I was short of time for the last moves before the time control. 25...Ng6!? 26.Rxa5 Ra7 27.Rxa7 Qxa7±)
26. Rg3	Rd8
27. Qe5?? (White threatens to win material: Qe5xg7 but in doing so gives the opponent counterplay. He should play 27.Nc1!? Ng6 28.h4 [28.Rxa5?! Qc4 29.Qd1 Rxd6] 28...Rxd6 29.Qg4±)	
27.....	Rbd7 (after 27...Nd7!? Black hangs on 28.Qe4 Nf6=)
28. h3 (28.Qxg7?! Rxd6 29.Rf3 R8d7=)	
28.....	Rxd6
29. Rxa5 (White has a new passed pawn: a4; 29.Rxg7 Qb6 30.Qf6 [30.Rxa5 Qxd4 31.Qxd4 Rxd4])	
29.....	Qc4
30. b3	Qc2??
31. Nxb4	Qc1+
32. Kh2	Rxd4
33. Rc5 (33.Ra8! seems even better 33...Rxa8 34.Qxd4+-)	
33.....	Qf1
34. Nxc6?? (There were better ways to keep up the pressure. [34.Nc2 Rd3 35.Rxd3 (35.Rxg7?! Qxf2 36.Rxc6 Rxb3=; <35.Qxg7 Qxf2 36.Rxc6 Rd1±; 35.Rxc6 Rd1 36.Rxg7 Qg1+ 37.Kg3 Rf1+-) 35...Qxd3 36.Nb4+-])	
34.....	Rd1
35. Rxg7	Qg1+
36. Kg3	R8d3+

37. f3?? (Causes further problems for White 37.Kh4 Qxf2+ 38.g3)



When we reached this position, White was not the only person in the room who thought he was still winning, but after looking at it when he got home found that he gets mated in every line, so resigned without resuming. 0-1

FRIENDLY MATCHES

Olton suffered a terrible defeat at the hands of Shirley at their venue on Thursday 13th August. What should have been the better side on the night must have been fooled by their inflated grades, as the games slowly slipped away. There were draws for Robert Reynolds and Richard Liszewski, plus wins for Trevor Holt and Gary Hope. There was little else for Olton to smile about, except for this game on top board.

WHITE D.Thomas
BLACK Phil Holt

1. d4	Nf6
-------	-----

DIVISION 6 FIXTURES

Several late changes in Divisions 5 and 6 mean that there will be some alteration to the fixtures from those published in the handbook. Halesowen, Wolseley and Tamworth have been entered in Division 6, while the two Mutual teams from that Division have moved as one team into Division 5. Opposing team captains will be confirming revised fixture dates in due course.

2. c4	e6
3. Nc3	Bb4
4. a3	Bxc3+
5. bxc3	b6
6. f3	Ba6
7. e4	Nc6
8. Bd3	Na5
9. Bg5 ? (This doesn't work. e5 is better, then Ng8 10. Qe2 to support the c4 pawn)	
9.....	Bxc4
10. e5	h6
11. exf6	hxg5
12. fxg7	Rg8
13. Bxc4	Nxc4
14. Qd3	d5 ! (This is what White missed. After 14... Nd6 ? 15. Qh7 Ke7 White has some play for the pawn)
15. Qh7	Kd7 !
16. h4	gxh4
17. Rxh4	Qg5
18. Qh6	Qg3+
19. Kf1	Ne3+
20. Ke2	Nf5

0-1
Richard Reynolds

SHIRLEY v OLTON

1. Dave Thomas	0-1	Phil Holt
2. Bob Walker	1-0	Richard Reynolds
3. Aled Walker	1-0	Mark Cundy
4. Jon Dale	1-0	Robert Wallman
5. Ken Warren	½-½	Robert Reynolds
6. Gordon Christie	0-1	Trevor Holt
7. Rob Purcell	0-1	Gary Hope
8. Eric Ward	½-½	Richard Liszewski
9. John Asbury	1-0	Bramwell Garner
10. John Freeman	1-0	Nigel Terry
11. Mike Warden	1-0	John Clulee
12. Frank Jimenez	1-0	Bill Yeomans
13. P.Purcell	1-0	Gabor Cspregi (SL)
14. P.Gough	1-0	Richard Simpson (SL)
	10-4	